

5IMPLE REASONS TO SWITCH

legrand

BELANKO™ / NEW RANGE OF WIRING DEVICES

 **legrand**®

5IMPLE REASONS TO SWITCH TO BELANKO™

With Belanko™, simplicity is beauty. Now, discover 5 good reasons why Belanko™ should be your choice for wiring devices.

IDEAL CHO1CE	02
NEAT PRE2ENTATION	04
EASY & SAF3 INSTALLATION	06
MORE FUNCTION4LITIES	08
WIDE AS5ORTMENT	12

IDEAL CHO1CE



With Belanko™, switches perform exactly the way you expect them to. Beyond performance, we give you a choice between large rockers and the conventional small one.



It is your choice. Either go with the small rockers that hold 1 to 6 gangs,
or the large rockers that feature 1 to 4 gangs.



FUNCTIONAL AND RELIABLE
1 gang switch with small rocker



COMPACT AND VERSATILE
5 gang switch with small rocker



CONTEMPORARY AND APPEALING
1 gang switch with large rocker



AESTHETICS MEETS FUNCTION
4 gang switch with large rocker

Colour Plates

Something more to go
along with?



SUBTLE BEIGE
2 gang switch with large rocker and
beige plate



DISTINCTIVE TAUPE
Double pole switch with red neon indicator
and large rocker and taupe plate

NEAT PRE²ENTATION



We know how important it is for professionals like you to deliver perfect installations fast – always. Because your goal is also our goal, we ensure that our switches are always neatly wrapped with a soft protection film.



You now enjoy peace of mind. Your switch stays clean and neat until it is delivered to the customer.



The soft protection film keeps the product safe from dust.



Only the soft protection film will get stained by the ongoing wall paintwork.



The result is a perfectly neat installation – every time.

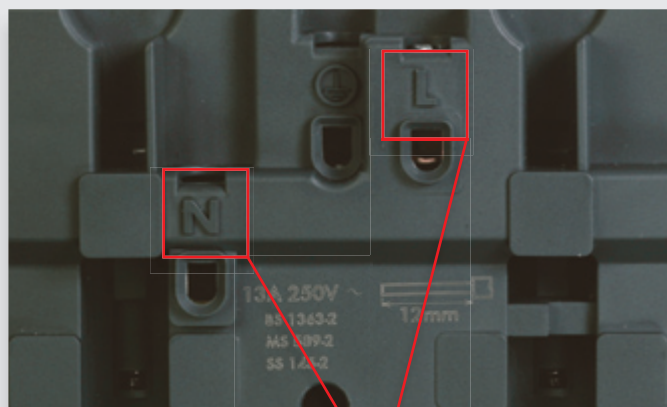
EASY & SAF³ INSTALLATION



Fitting switches is probably only one of the many tasks that you have to undertake. By making sure that installation is safe and easy, you are left with more time to tackle other tasks.



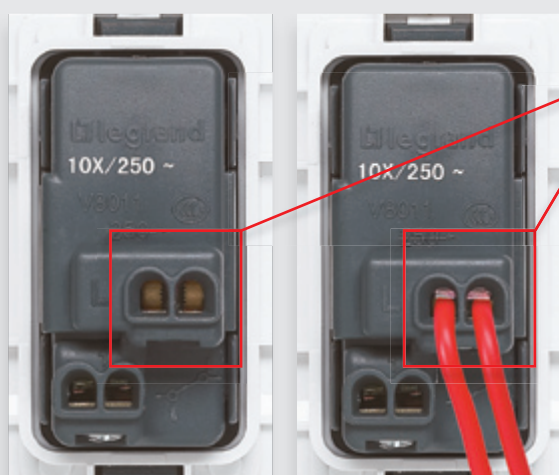
The safety features of Belanko™ wiring devices make installation both easy and safe.



Clear marking of terminals for easy identification and safe wiring



Double entry for each terminal facilitates wiring



Wires are held in place with the clamping plate. This reduces the risk of damaging wires. The combination of double entry and clamping plate ensures long term reliability of the connection.

Certified Quality

Your safety is our top priority. That's why Belanko™ wiring devices are compliant with safety standards.



MORE FUNCTION⁴LITIES



Need something extra? Belanko™ has just that.
We provide additional functions to suggest just a few
more possibilities to meet your everyday lifestyle needs.



For enhanced comfort, Belanko™ offers dimming solutions for complex lighting.



1000W Dimmer

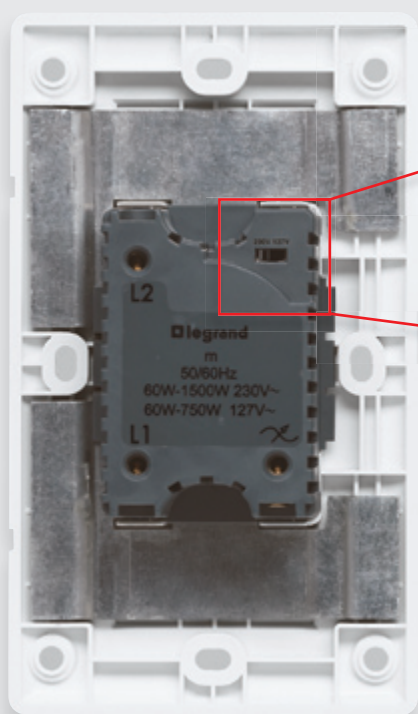


1500W Dimmer

1000W and 1500W Dimmers

These new 2-way Push ON/OFF Rotary dimmers can be associated with a switch for remote ON/OFF control from another point in the installation.

They memorise the last light level set before switch-off – and when switched on again, light level will be restored as previously memorised.



Voltage Selection (for 1500W dimmers)

A rated voltage converting switch on the upper right part of the base allows you to select – 230V or 127V. Factory setting is 230V.



MORE FUNCTION⁴LITIES

1500W dimmer

Ideal for upgrade or retrofit

With the 1500W dimmer, upgrading of existing installations is really easy. It can be fitted in either 1 gang or 2 gang boxes, so that there is no need to change boxes in case of retrofit.



Safely connected to power – in different standards



13 A BS socket outlet, double pole, switched – whenever special safety is required



15 A US socket outlet, 2P + E



16 A German standard socket outlet, 2P + E

Socket protection IP44



The splash-proof cover for socket protection ensures IP44 with or without plug engaged.



Single TV socket, female

Get connected with TV, telephone and data sockets

Complete with TV, telephone and data sockets, Belanko™ not only keeps you connected to power but also to the rest of the world.



Double RJ 11 socket



Double RJ 45 socket

WIDE AS50RTMENT



Architrave,
1 gang, 1-way



5 gang switch



1 gang switch



4 gang switch



1500W Push ON/OFF
Rotary dimmer



Fan control



Single TV socket, "F" type



Double RJ 11 telephone
socket



Double RJ 45 data
socket



Push-button with bell symbol



45 A Double pole switch



1000W Push ON/OFF
Rotary dimmer



2 gang single pole BS switched socket outlet



1 gang BS switched
socket outlet



Fused connection unit



Cable outlet

PRODUCT CATALOGUE

NEW

Belanko™

single pole switches and push-buttons, small rocker



617 100



617 108



617 115

Colour: White T084

Material: Thermoplastic with glossy finish

Dimensions: 86 x 86 x 9.5 mm (1 gang) / 86 x 146 x 9.5 mm (2 gang)

Supplied with 2 screws M3.5 for BS boxes

Single pole switches - small rocker

Pack	Cat.Nos		
		Conform to BS EN 60669-1 and SASO No LIC 204803	
		10 AX - 250 V~	
10	617 100		1 gang - 1-way switch
10	617 101		1 gang - 2-way switch
10	617 102		2 gang - 1-way switch
10	617 103		2 gang - 2-way switch
10	617 104		3 gang - 1-way switch
10	617 105		3 gang - 2-way switch
10	617 106		4 gang - 1-way switch
10	617 107		4 gang - 2-way switch
10	617 108		5 gang - 1-way switch
5	617 110		6 gang - 1-way switch
10	617 109		Intermediate switch

April 2011

Architrave

5	617 115		1 gang - 1-way
5	617 116		Bell push

Push-button 4 A - 250 V~

		Conform to BS EN 60669-1 and SASO No LIC 204803	
10	617 111		Bell push

Belanko™

single pole switches and push-buttons, large rocker



617 000



617 006

Colour: White T084

Material: Thermoplastic with glossy finish

Dimensions: 86 x 86 x 9.5 mm (1 gang) / 86 x 146 x 9.5 mm (2 gang)

Supplied with 2 screws M3.5 for BS boxes

Single pole switches - large rocker

Pack	Cat.Nos		
		Conform to BS EN 60669-1 and SASO No LIC 204803	
		10 AX - 250 V~	
10	617 000		1 gang - 1-way switch
10	617 001		1 gang - 2-way switch
10	617 002		2 gang - 1-way switch
10	617 003		2 gang - 2-way switch
10	617 004		3 gang - 1-way switch
10	617 005		3 gang - 2-way switch
10	617 006		4 gang - 1-way switch
10	617 007		4 gang - 2-way switch
10	617 009		Intermediate switch
		20 AX - 250 V~	
10	617 020		1 gang - 1-way
10	617 021		1 gang - 2-way
10	617 022		2 gang - 1-way
10	617 023		2 gang - 2-way

Push-button 4 A - 250 V~

		Conform to BS EN 60669-1 and SASO No LIC 204803	
10	617 011		Bell push

Belanko™

double pole switches and cooker control unit



617 072



617 076

Colour: White T084

Material: Thermoplastic with glossy finish

Dimensions: 86 x 86 x 9.5 mm (1 gang) / 86 x 146 x 9.5 mm (2 gang)

Supplied with 2 screws M3.5 for BS boxes

Belanko™

dimmers and ventilation control



617 031



617 033

Colour: White T084

Material: Thermoplastic with glossy finish

Dimensions: 86 x 86 x 9.5 mm (1 gang) / 86 x 146 x 9.5 mm (2 gang)

Supplied with 2 screws M3.5 for BS boxes

Pack	Cat.Nos	Double pole switches
		Conform to BS EN 60669-1
		20 A - 250 V~
		Conform to SASO No LIC 204803
10	617 070	1 gang - 1-way switch + red neon indicator
10	617 071	1 gang - 1-way switch + red neon indicator + earth connection
10	617 072	1 gang - 1-way switch + red neon indicator + earth connection with "Water Heater" marking
		32 A - 250 V~
10	617 074	1 gang - 1-way switch + red neon indicator, white rocker
		45 A - 250 V~
		Conform to SASO No LIC 204803
10	617 075	1 gang - 1-way switch
10	617 076	1 gang - 1-way switch + red neon indicator
5	617 077	2 gang - 1-way vertical switch + red neon indicator

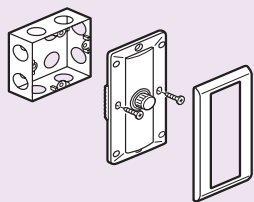
Pack	Cat.Nos	Cooker Control Unit - 250 V
		Conform to SASO No LIC 204830
5	617 078	45 A DP switch + red neon and 13 BS switched socket outlet + red neon

Pack	Cat.Nos	Dimmers
		Conform to BS EN 60669-1 and SASO No LIC 204803
1	617 030	600 W - 230 V 50 Hz 1 gang - 1-way 86 x 86 mm Rotary on/off dimmer
1	617 031	1000 W (230 V) - 500 W (127 V) 50/60 Hz 1 gang - 2-way 86 x 86 mm Push on/off and rotary dimmer
1	617 032	1500 W (230 V) - 750 W (127 V) 50/60 Hz 2 gang - 2-way 86 x 146 mm Push on/off and rotary dimmer Can be mounted on 1 gang or 2 gang boxes
		Ventilation control
		Conform to BS EN 60669-1 and SASO No LIC 204803
1	617 033	Fan control 250 V~ 50 Hz

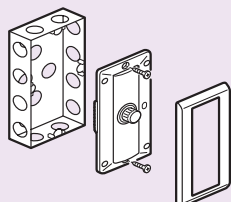
Belanko™ dimmers

Belanko™ ventilation control

■ Fixing in 1 or 2 gang boxes - Dimmer Cat.No 617 032 - 1500 W



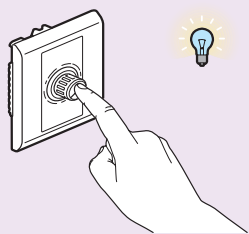
Preparation with 1-gang box



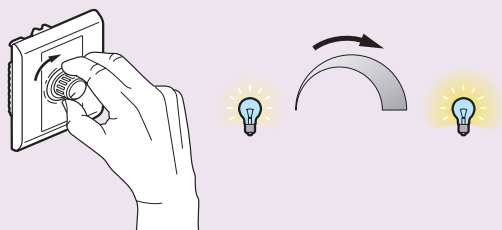
Preparation with 2-gang box

■ Choose your brightness adjustment - Dimmer Cat.Nos 617 031/032 - 1000 W / 1500 W

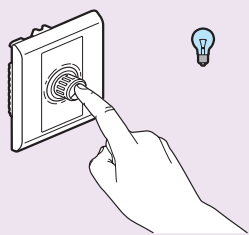
Push ON/OFF and rotary dimming



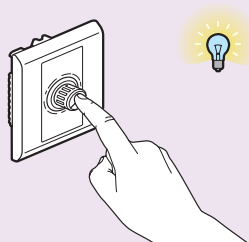
Push to turn ON



Rotate for brightness adjustment

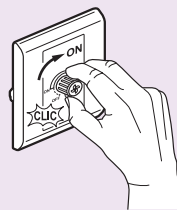


Push to turn OFF
When pushed OFF, the dimmer memorizes the light level for the next switching ON

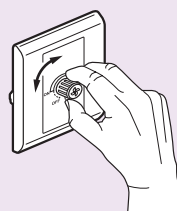


Push ON
The light level will be restored as previously memorized

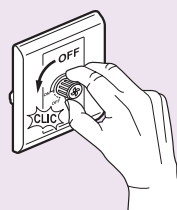
■ Ventilation control Cat.No 617 033



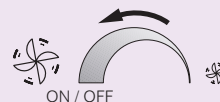
Rotate to turn ON
When turned ON the fan control works at full capacity. This ensures that the whole ventilation system - fan included - is effectively ON.



Rotate to reduce the speed



Rotate to turn OFF
Going back to full capacity before turning OFF ensures that the whole ventilation system - and not only the fan - will be effectively switched OFF



Belanko™

television, telephone and data sockets



617 121

617 097

617 092

617 068

Colour: White T084

Material: Thermoplastic

Dimensions: 86 x 86 x 9.5 mm (1 gang) / 86 x 146 x 9.5 mm (2 gang)

Supplied with 2 screws M3.5 for BS boxes

Product for
Singapore
only

Product for
Hong Kong
only

Pack	Cat.Nos	Television sockets
		Conform to SASO No LIC 204834
1	617 124	2 gang SCV outlet + TV-FM type F
10	617 121	Single TV socket, female
10	617 120	Single TV socket, "F" type
10	617 123	Double TV socket, female + "F" type
10	617 122	TV female pass through
10	617 126	TV female terminal
10	617 125	Double TV female terminal type

Pack	Cat.Nos	Telephone sockets
		Conform to SASO No LIC 204834
10	617 099	Telephone connection block 10 connections
10	617 095	BT master
10	617 096	BT secondary
10	617 097	RJ 11 socket
10	617 098	Double RJ 11 socket

Pack	Cat.Nos	Data sockets
		Conform to SASO No LIC 204834
10	617 090	RJ 45 Cat.5e UTP
10	617 091	RJ 45 Cat.6 UTP
10	617 092	Double RJ 45 Cat.6 UTP

Pack	Cat.Nos	Shaver socket
		Conform to BS 61558 and SASO No LIC 204837
1	617 068	115/230 V - 20 VA - 50/60 Hz Surface or flush-mounting, back box to be min. 47 mm deep - 2 gang

Pack	Cat.Nos	Security switch
1	617 019	1 A resistive - 250 V~ Panic button

Belanko™

socket outlets, fused connection units



617 041



617 046



617 065



617 081

Colour: White T084

Material: Thermoplastic with glossy finish

Dimensions: 86 x 86 x 9.5 mm (1 gang) / 86 x 146 x 9.5 mm (2 gang)

Supplied with 2 screws M3.5 for BS boxes

Pack	Cat.Nos	British Standard socket outlets	
		13 A - 250 V~ Conform to BS 1363-2 and SASO No LIC 204830	
10	617 040		1 gang unswitched
5	617 045		2 gang unswitched
10	617 041		1 gang single pole switched
5	617 046		2 gang single pole switched
10	617 042		1 gang single pole switched + neon
5	617 047		2 gang single pole switched + neon
10	617 141		1 gang single pole switched with external rocker
5	617 146		2 gang single pole switched with inboard rockers
5	617 049		2 gang single pole switched with red cover + neon
10	617 043		1 gang double pole switched
5	617 048		2 gang double pole switched
		15 A - 250 V~ Conform to BS 546	
10	617 050		1 gang unswitched
10	617 051		1 gang single pole switched
10	617 052		1 gang single pole switched + neon

Pack	Cat.Nos	British Standard socket outlets (continued)	
10	617 054		1 gang single pole switched
		Euro/US socket outlets - 10 A - 250 V~ / 15 A - 127 V~	
10	617 060		1 gang - 2P
10	617 061		1 gang - 2P + 10 AX switch
10	617 062		1 gang - 2 x 2P
10	617 063		1 gang - 2P+E
		US socket outlet - 15 A - 127 V~	
10	617 065		1 gang - 2P+E
		German Standard socket outlet 16 A, 2P+E Shuttered with child protection	
10	617 066		1 gang
		Fused connection units	
		13 A Conform to BS 1363-4 and SASO No LIC 204803	
10	617 080		Unswitched + cord outlet
10	617 081		Switched + cord outlet
10	617 082		Switched + neon + cord outlet

Belanko™

fused connection units (continued)
cable outlets, accessories, surface-mounting boxes



617 131 + 617 042



613 351

Pack Cat.Nos Fused connection units (continued)

Pack	Cat.Nos	2 A
10	617 080-2	Unswitched + cord outlet
10	617 081-2	Switched + cord outlet
10	617 082-2	Switched + neon + cord outlet



Cable outlets

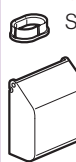
Conform to BS 5733 and SASO No LIC 204840

10	617 085	20 A - 250 V~
10	617 086	45 A - 250 V~



Fixing accessories

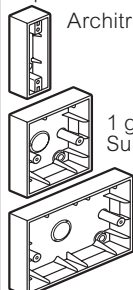
100	617 130	Screw caps
2	617 131	Splash-proof cover Mainly for socket protection IP44 with or without plug engaged Space inside : 86 x 86 mm (for Belanko, Mallia and Synergy products)



Surface-mounting boxes

Conform to BS 5733 and SASO No LIC 204803
depth 35 mm

10	613 349	Architrave surface box
8	613 350	1 gang surface box - 86 x 86 mm Supplied with earth terminal
4	613 351	2 gang surface box - 86 x 146 mm Supplied with earth terminal



Belanko™

cover plates, blanking plates



617 151



617 155

Pack Cat.Nos Cover plates

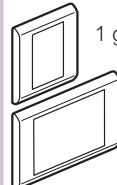
Pack	Cat.Nos	1 gang
5	617 150	Horizontal beige
5	617 151	Vertical beige
5	617 155	Horizontal taupe
5	617 156	Vertical taupe
2 gang		
5	617 152	Horizontal beige
5	617 153	Vertical beige
5	617 157	Horizontal taupe
5	617 158	Vertical taupe



Blanking plates

Conform to BS 5733 and SASO No LIC 204803

10	617 128	1 gang
5	617 129	2 gang



Notes



**World Headquarters
and International Department**
87045 Limoges Cedex - France

☎ : + 33 (0) 5 55 06 87 87

Fax: + 33 (0) 5 55 06 74 55

www.legrandgroup.com